

# COLOR CHART



clart-sas.it\_itt

**Composition:** 100% 100% Polyester - Trevira CS

**Color:** Check on the available list

**Weight:** 300 g/sqm - Tolerance  $\pm$  5%

**Width:** 1400 mm

**Abrasion resistance:** 100000 rubs - Tolerance  $\pm$  10% (UNI EN ISO 12947/2)

**Light fastness:** Blue scale 6 - Tolerance from 5 to 8 (UNI EN ISO 105-B02)

**Fastness to rubbing:** Grey scale tra 4 e 5 - Tolerance from 4 to 5 (UNI EN ISO 105-X12)

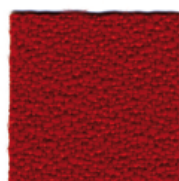
**Flamability:** Classe 1  
B1  
M1  
CRIB 5  
EN 1021/1-2  
IMO A 652 (16)

ITALY  
GERMANY  
FRANCE  
UK  
EUROPE  
MARINE INDUSTRY

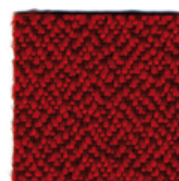
**Cleaning and washing:**



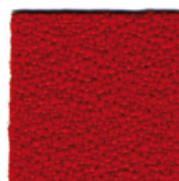
# COLOR CHART



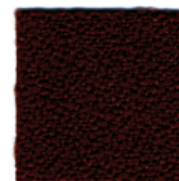
4008



9244



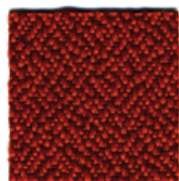
4027



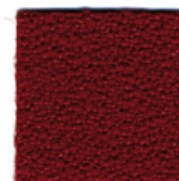
4017



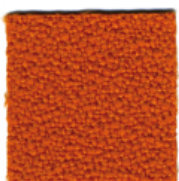
3094



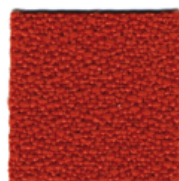
9404



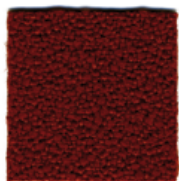
4019



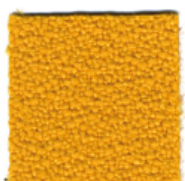
4030



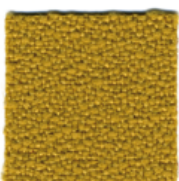
4014



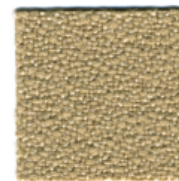
4015



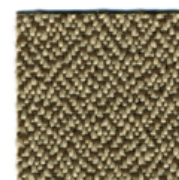
3008



3081



1008

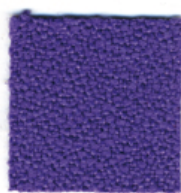


9212

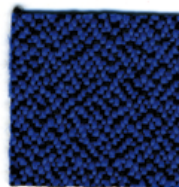


Via Postiglione 10  
10024 Moncalieri - TORINO (ITALY)  
Tel: +39 011 9610539  
Fax: +39 011 9610212  
info@acusticaindustriale.com  
[www.acusticaindustriale.com](http://www.acusticaindustriale.com)

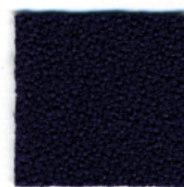
# COLOR CHART



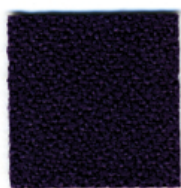
5003



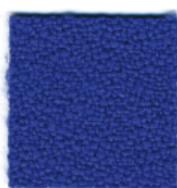
9268



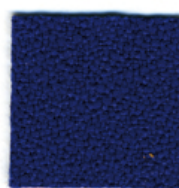
6098



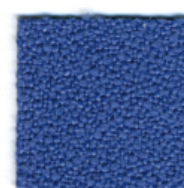
5004



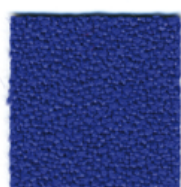
6071



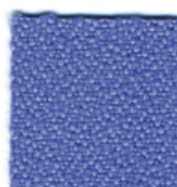
6080



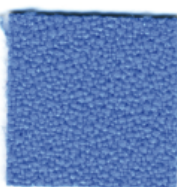
6026



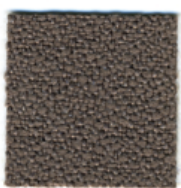
6059



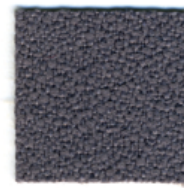
9606



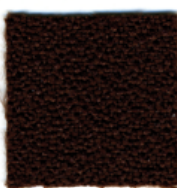
6006



2005



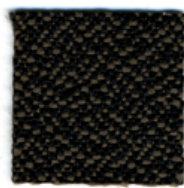
8009



2036

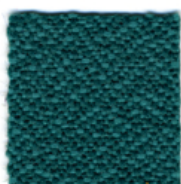


2007

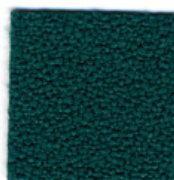


9228

# COLOR CHART



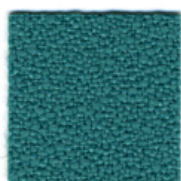
9273



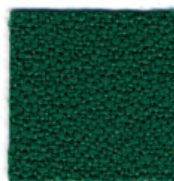
7008



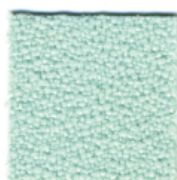
7033



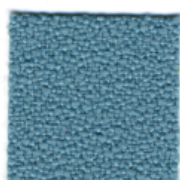
7077



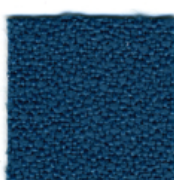
7029



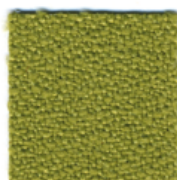
7032



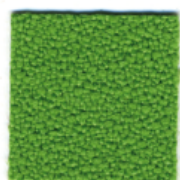
7026



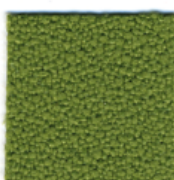
6014



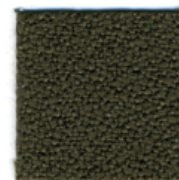
7004



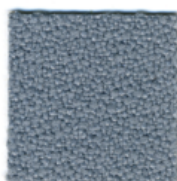
7013



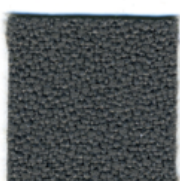
7019



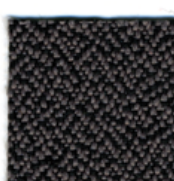
7022



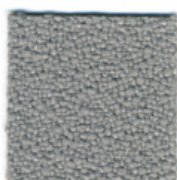
8014



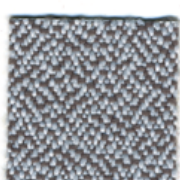
8007



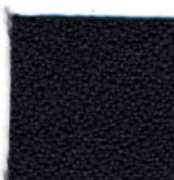
9289



8044



9202



8010



8033